

# FOR THE FULL BAND

**BASS  
CLEF**

**TIME  
SIGNATURE**

**WHOLE  
NOTE**

**WHOLE  
REST**


Ledger Line

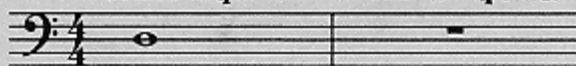
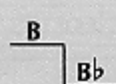
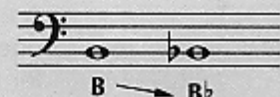
Bar Lines

Staff

Measures

$\frac{4}{4}$  = 4 counts in each measure

 A whole note gets 4 counts in  $\frac{4}{4}$  time.

 A whole rest gets 4 counts in  $\frac{4}{4}$  time.

**FLAT**


A flat (b) lowers the pitch of a note one half step. It remains in effect for the entire measure.

## 1 TIME FOR BAND

D

The number indicates what position to use.

A double bar line marks the end of the music.

## 2 THE FUN CONTINUES

C

## 3 WHOLE LOTTA COUNTING

Write in the counting and clap the rhythm before you play.

## 4 FOUR SCORE

Page 39

B flat (Bb)

Bb

When you see a page number followed by an arrow, *Excellerate* to the page indicated for additional studies.

## 5 MIX 'EM UP

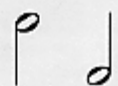
## 6 MELTING POT

## 7 BAND ON PARADE




 Lines with a medal are *Achievement Lines*. The chart on page 47 can be used to record your progress.

**HALF NOTE**



**HALF REST**

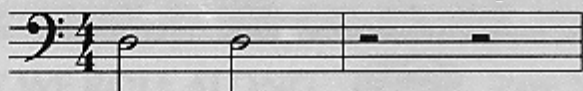


**BREATH MARK**



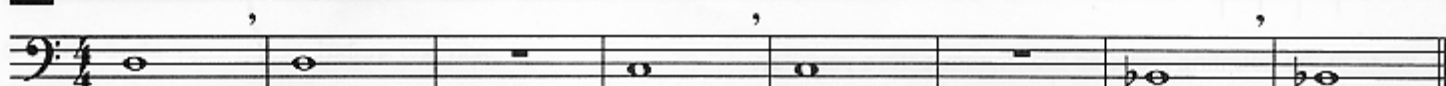
Each half note gets  
2 counts in  $\frac{4}{4}$  time.

Each half rest gets  
2 counts in  $\frac{4}{4}$  time.



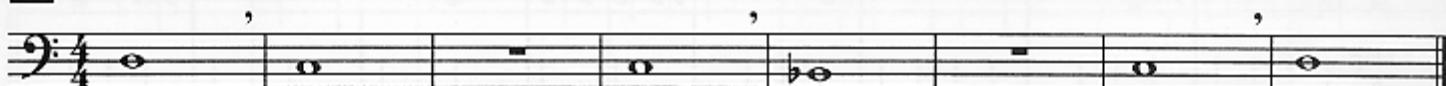
Take a breath.

**8 A BREATH OF FRESH AIR**

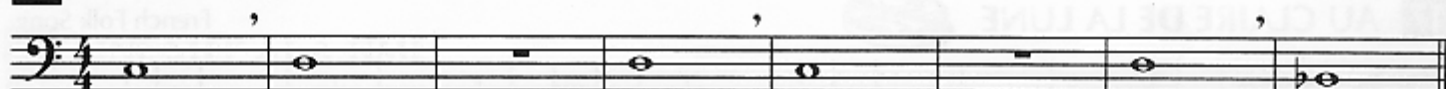


► Be sure to take a full breath of air.

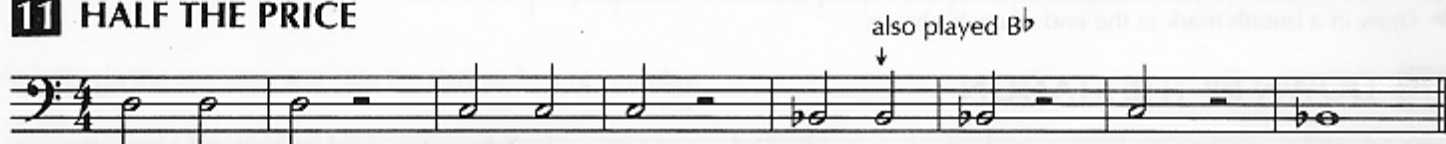
**9 SIDE BY SIDE**



**10 TWO BY TWO**



**11 HALF THE PRICE**



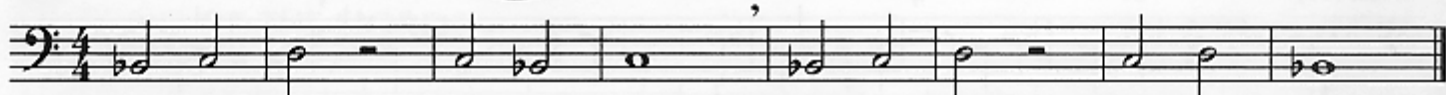
► Write in the counting and clap the rhythm before you play.

**12 CARDIFF BY THE SEA**



Page 39

Welsh Folk Song

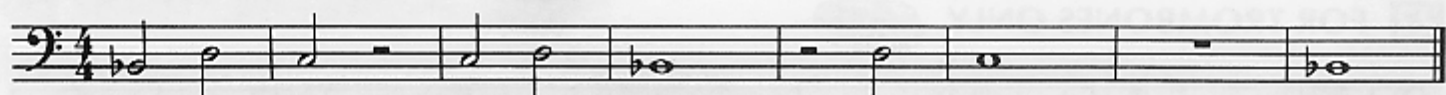


**13 TWO FOR THE SHOW - Duet**

A.

B.

**14 GO FOR EXCELLENCE!**



## QUARTER NOTE

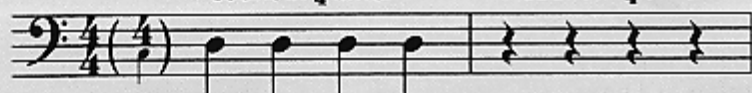


## QUARTER REST



Each quarter note gets  
1 count in  $\frac{4}{4}$  time.

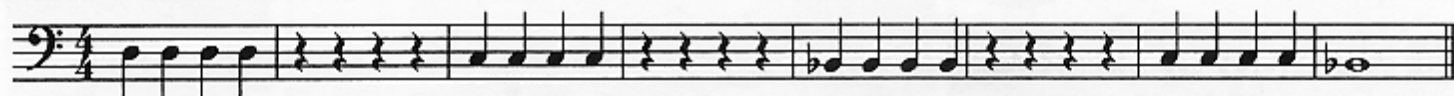
Each quarter rest gets  
1 count in  $\frac{4}{4}$  time.



## PHRASE

A phrase is a musical thought or sentence. Phrases are usually four or eight measures long.

### 15 A QUARTER'S WORTH



► Write in the counting and clap the rhythm before you play.

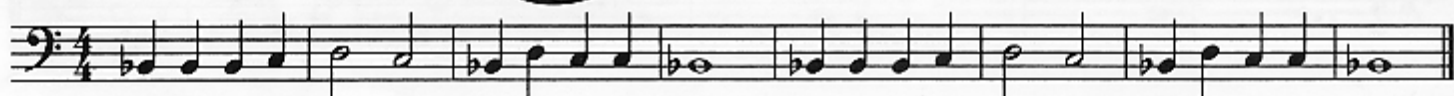
### 16 HOT CROSS BUNS

English Folk Song

### 17 AU CLAIRE DE LA LUNE



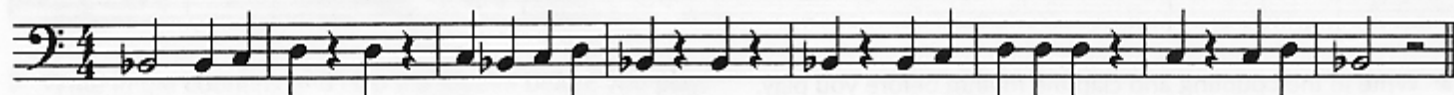
French Folk Song



► Draw in a breath mark at the end of each phrase.

### 18 DOWN BY THE STATION

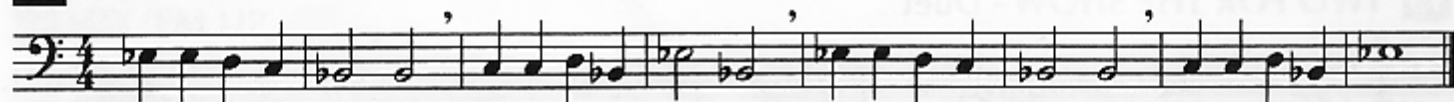
Traditional



### 19 EASY STREET

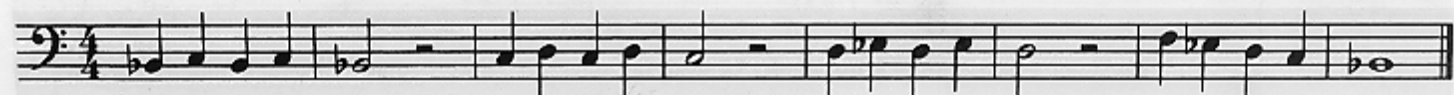
### 20 COUNTRY WALK

English Folk Song

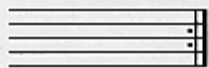






### 21 GETTIN' IT TOGETHER

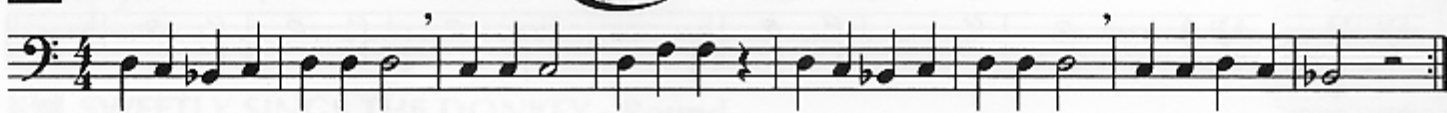
### 22 FOR TROMBONES ONLY





<b>REPEAT SIGN</b>	<b>COMMON TIME</b>	<b>FERMATA</b>	<b>SOLO</b>	One person plays.
			<b>SOLI</b>	Whole section plays.
Repeat from the beginning.	$C = \frac{4}{4}$ Common time means the same as $\frac{4}{4}$ time.	Hold the note or rest longer than its usual value.	<b>TUTTI</b>	Everyone plays.

**23 MERRILY WE ROLL ALONG**  Page 39  Traditional



► Write in the note names before you play.

**24 LIGHTLY ROW - Duet** Traditional

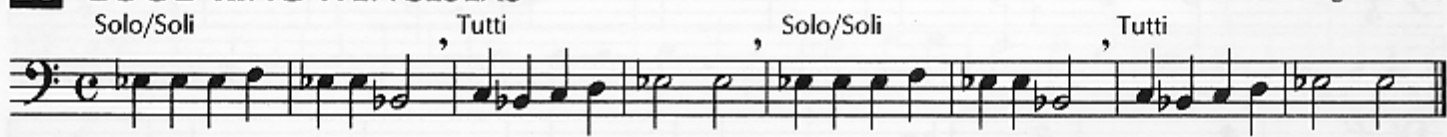


**25 ONE STEP AT A TIME**

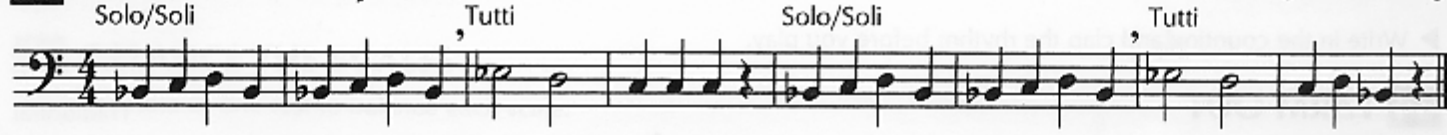


► Write in the counting and clap the rhythm before you play.

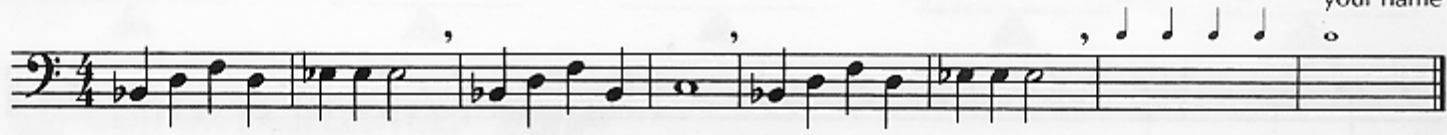
**26 GOOD KING WENCESLAS** Traditional English Carol



**27 SONG OF THE FJORDS** Norwegian Folk Song



**28** \_\_\_\_\_ Composer \_\_\_\_\_ your name



► Fill in the rest of the measures using the given rhythms and any notes you know. Title and play your composition.

**29 GO FOR EXCELLENCE!** 